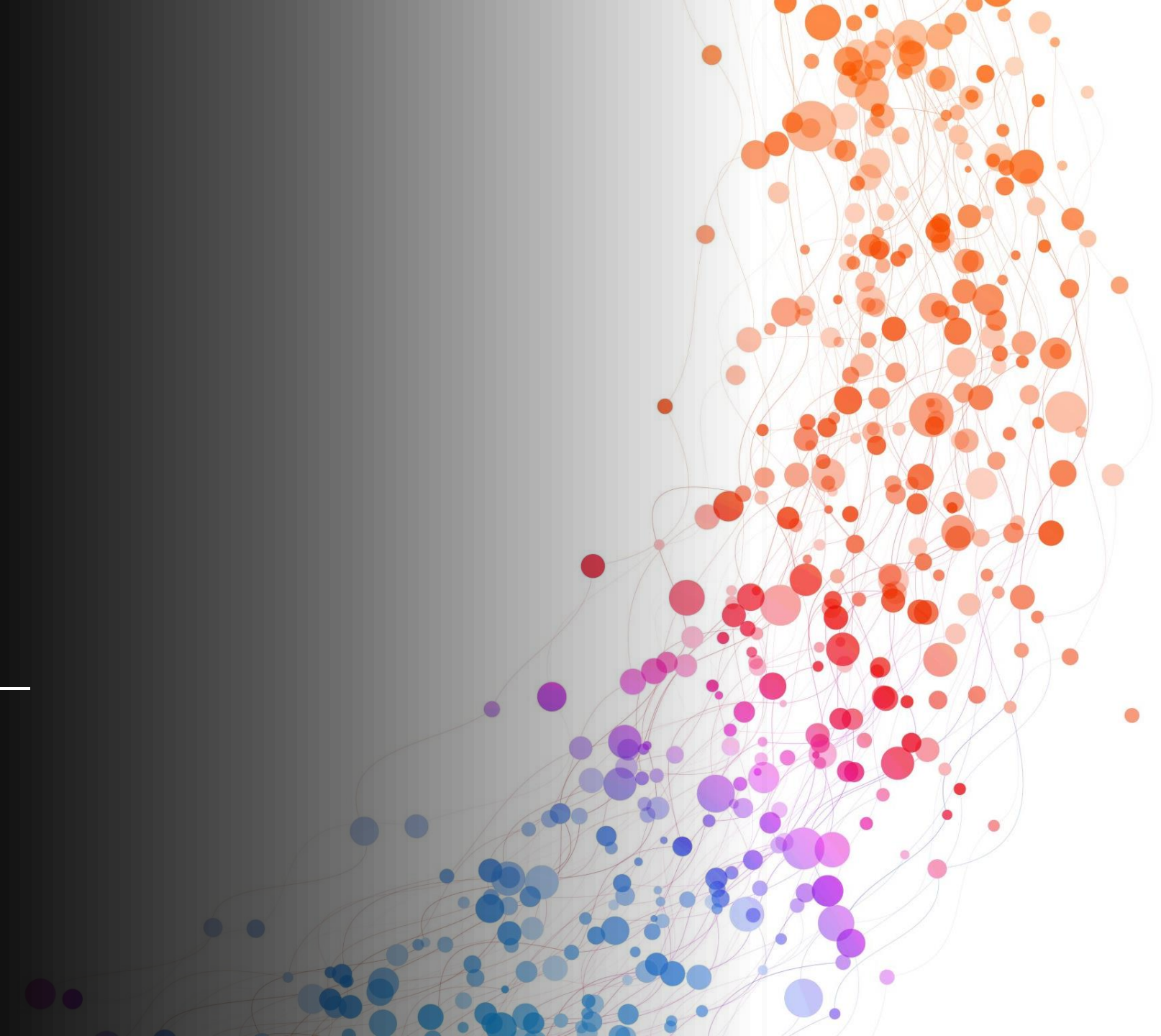


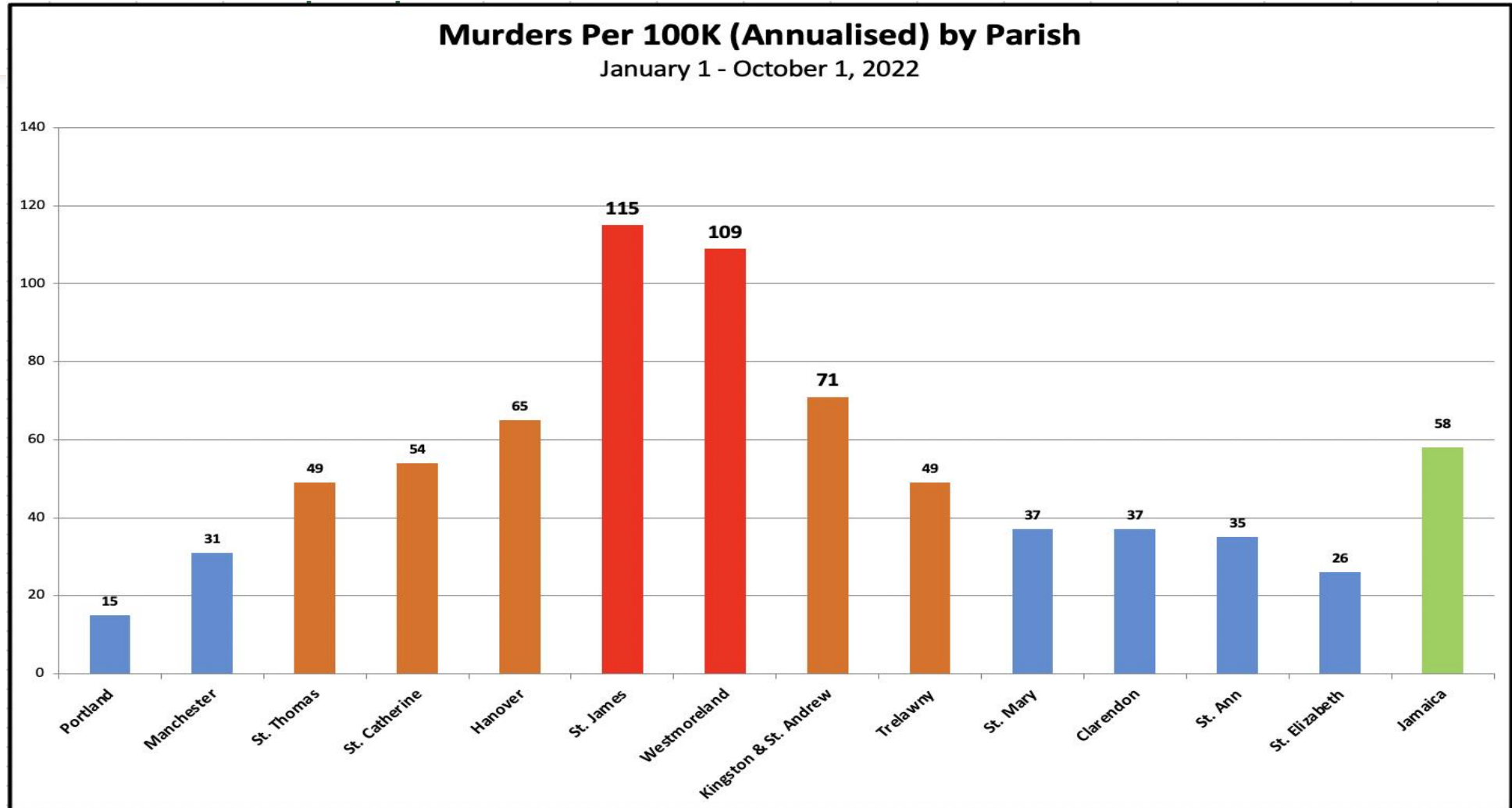


Jamaica Crime Charts

October 2022



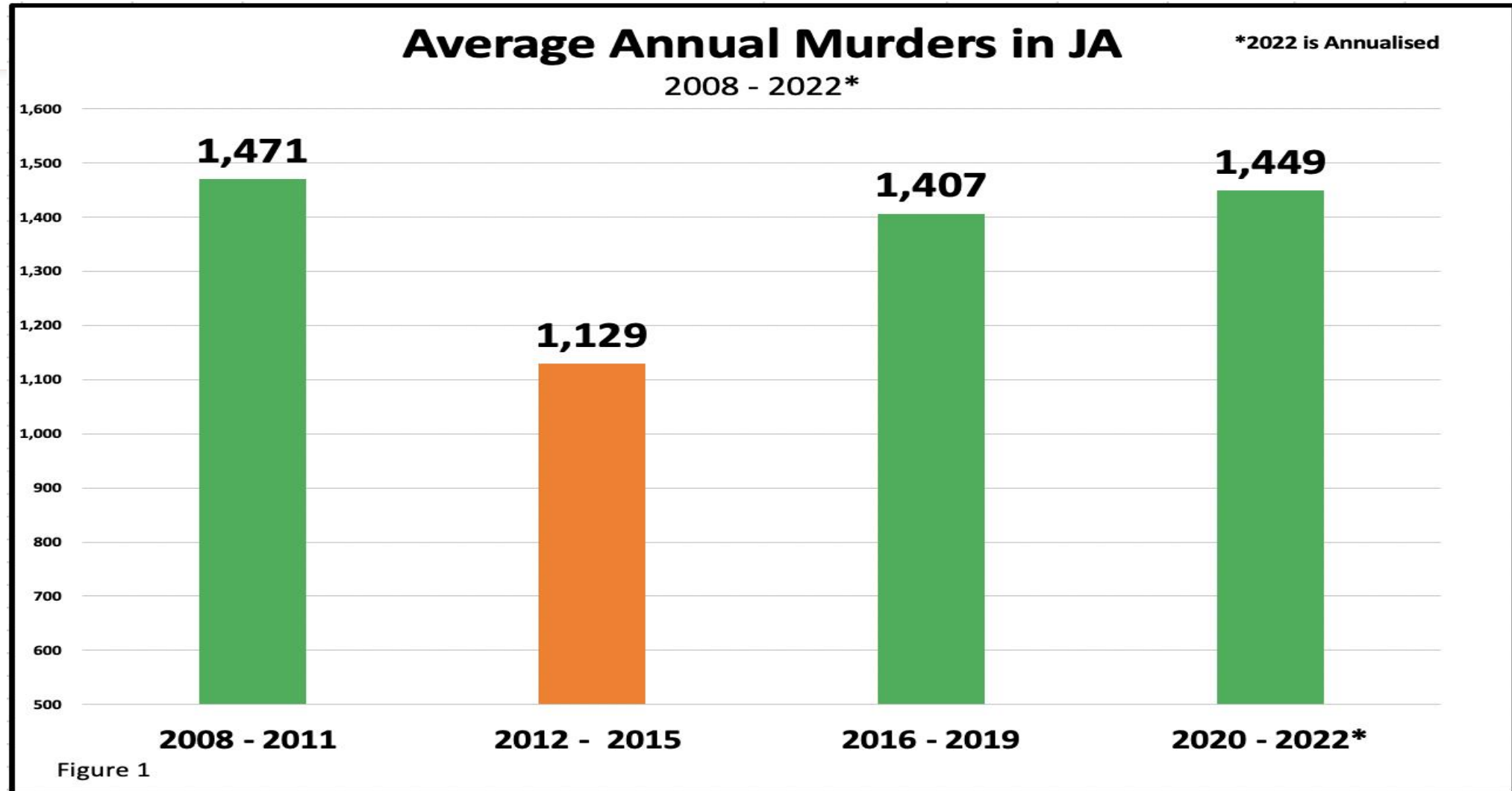
Murders Per 100k (Annualised) by Parish



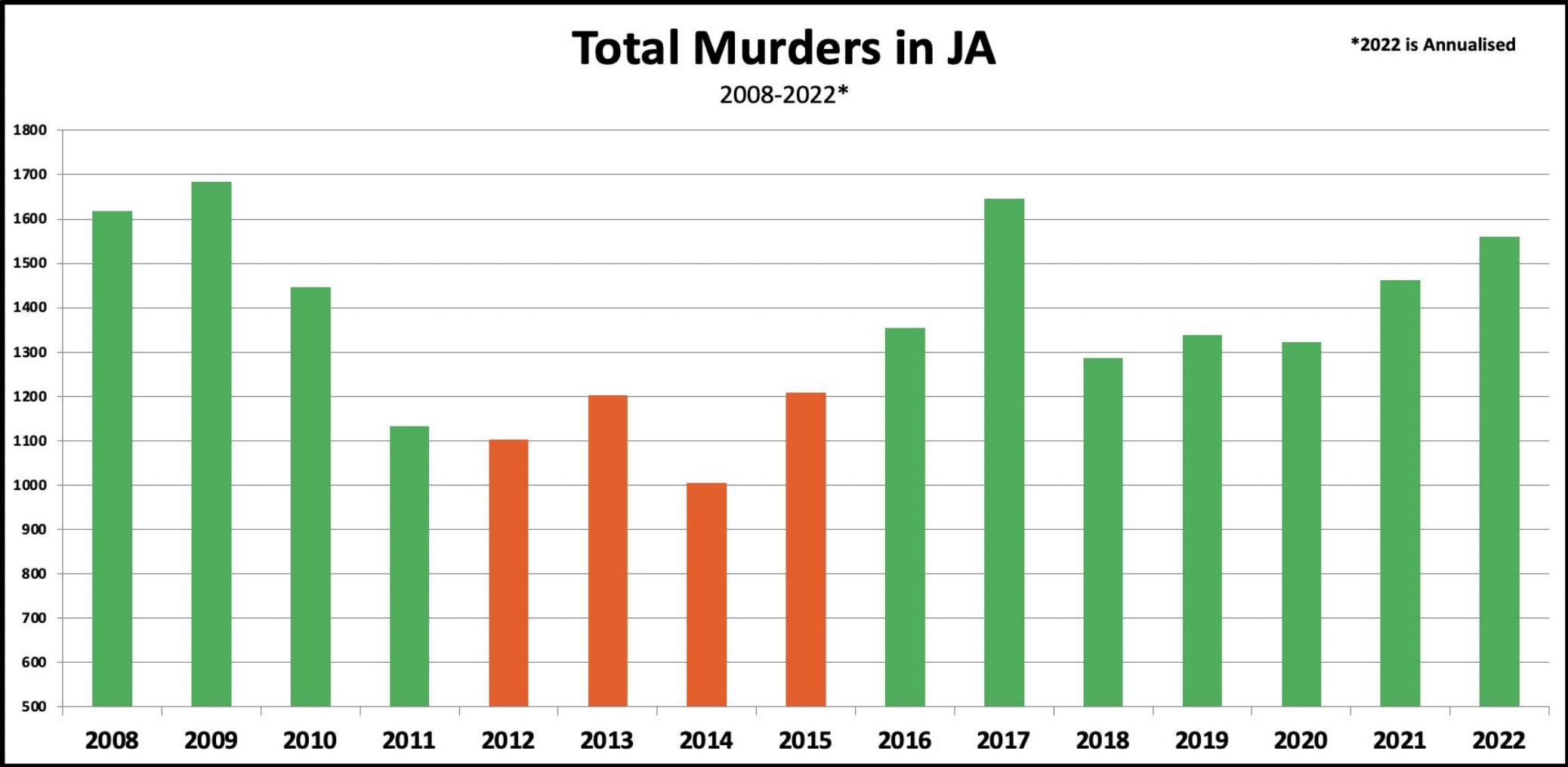
Murders Per 100k Graph

Parish	Actual Murders Y-T-D	# of Days Y-T-D	Avg Daily Rate YTD	Days	Total Murders Annualised	Population	100,000/ Pop	Murders Per 100K Annualised
Portland	9	274	0.032846715	365	11.98905109	82,183	1.216796661	15
Manchester	44	274	0.160583942	365	58.61313869	190,812	0.524076054	31
St. Thomas	35	274	0.127737226	365	46.62408759	94,410	1.059209829	49
St. Catherine	211	274	0.770072993	365	281.0766423	518,345	0.192921703	54
Clarendon	69	274	0.251824818	365	91.91605839	246,322	0.40597267	37
Kingston & St. Andrew	355	274	1.295620438	365	472.9014599	666,041	0.150140907	71
St. James	160	274	0.583941606	365	213.1386861	184,662	0.54152993	115
Westmoreland	118	274	0.430656934	365	157.189781	144,817	0.690526665	109
Hanover	34	274	0.124087591	365	45.2919708	69,874	1.431147494	65
St. Ann	46	274	0.167883212	365	61.27737226	173,232	0.577260552	35
St. Mary	32	274	0.116788321	365	42.62773723	114,227	0.875449762	37
Trelawny	28	274	0.102189781	365	37.29927007	75,558	1.323486593	49
St. Elizabeth	30	274	0.109489051	365	39.96350365	150,993	0.662282357	26
Jamaica	1171	274	4.273722628	365	1559.908759	2,711,476	0.036880282	58

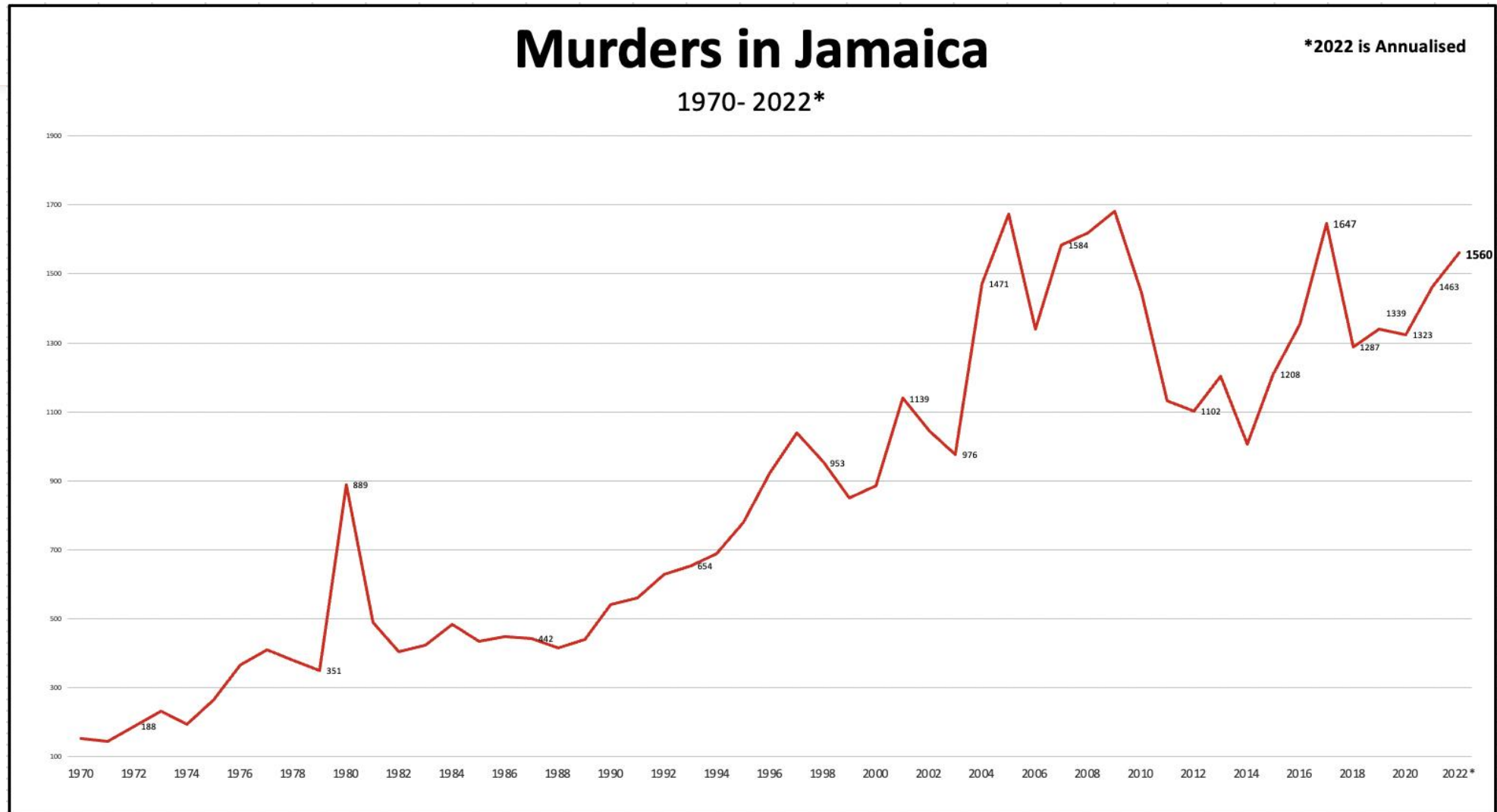
Average Murders in JA Annually



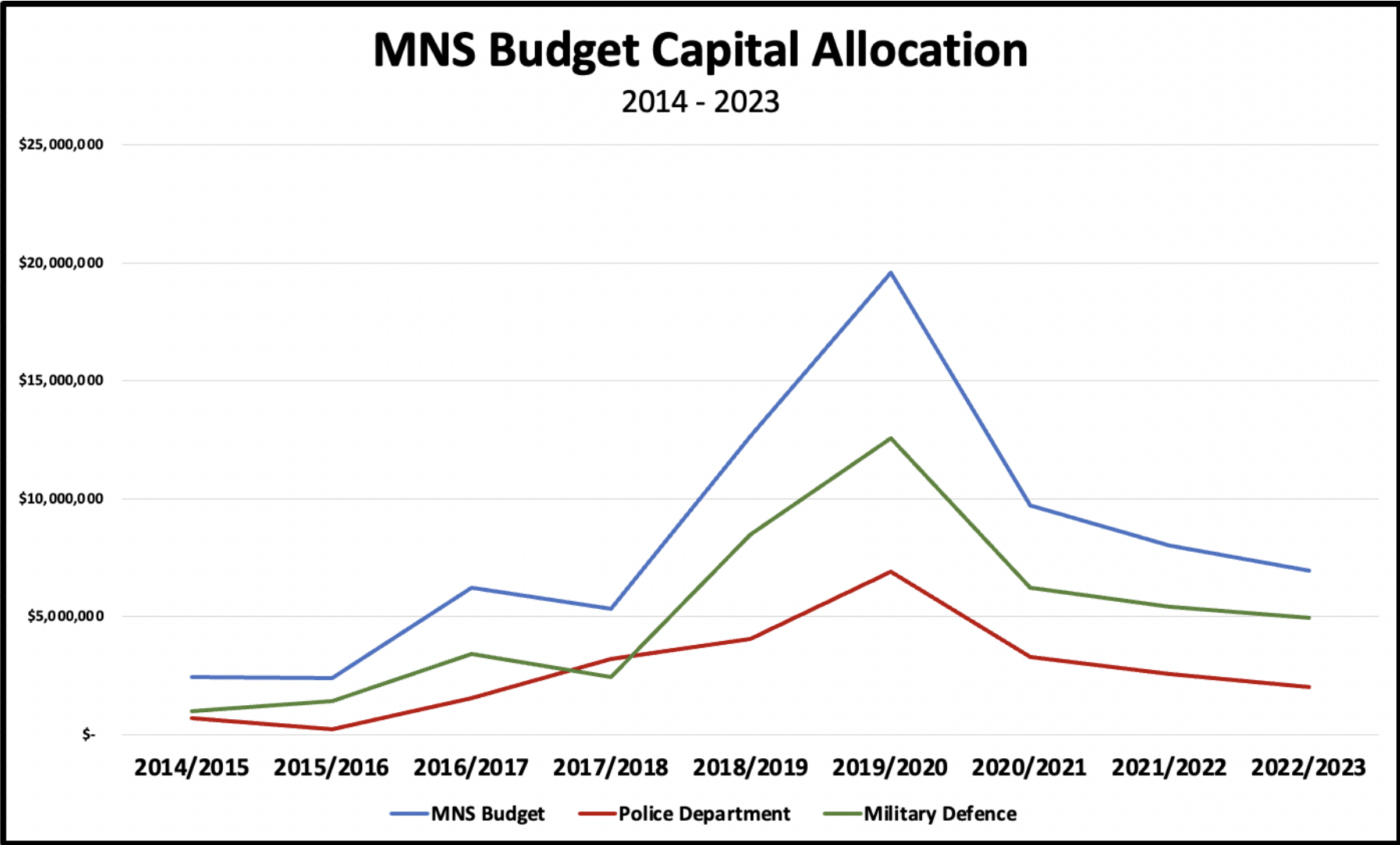
Murders in Jamaica



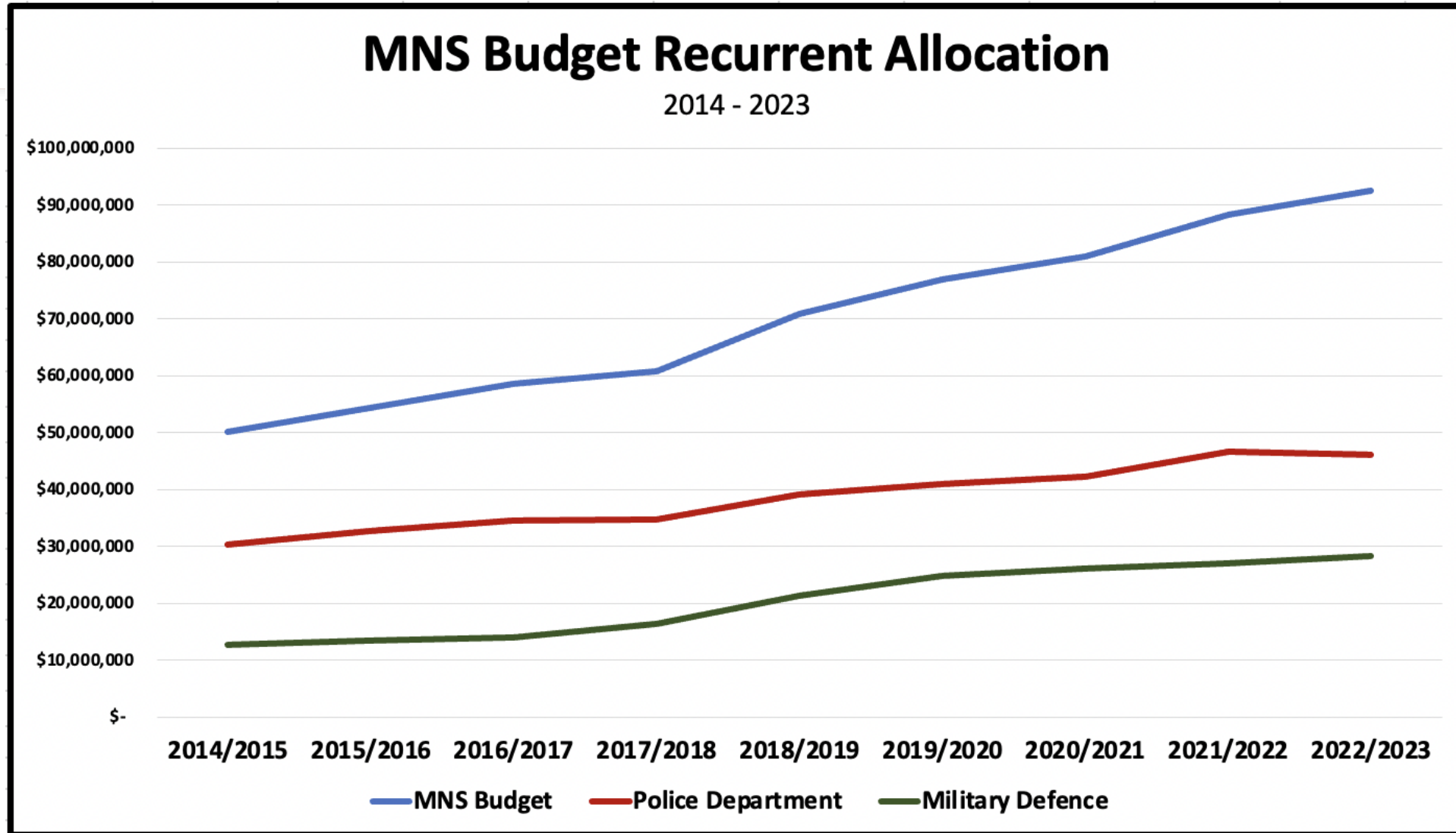
Total Murders in Jamaica



MNS Capital Budget



MNS Recurrent Budget



JCF Strength

